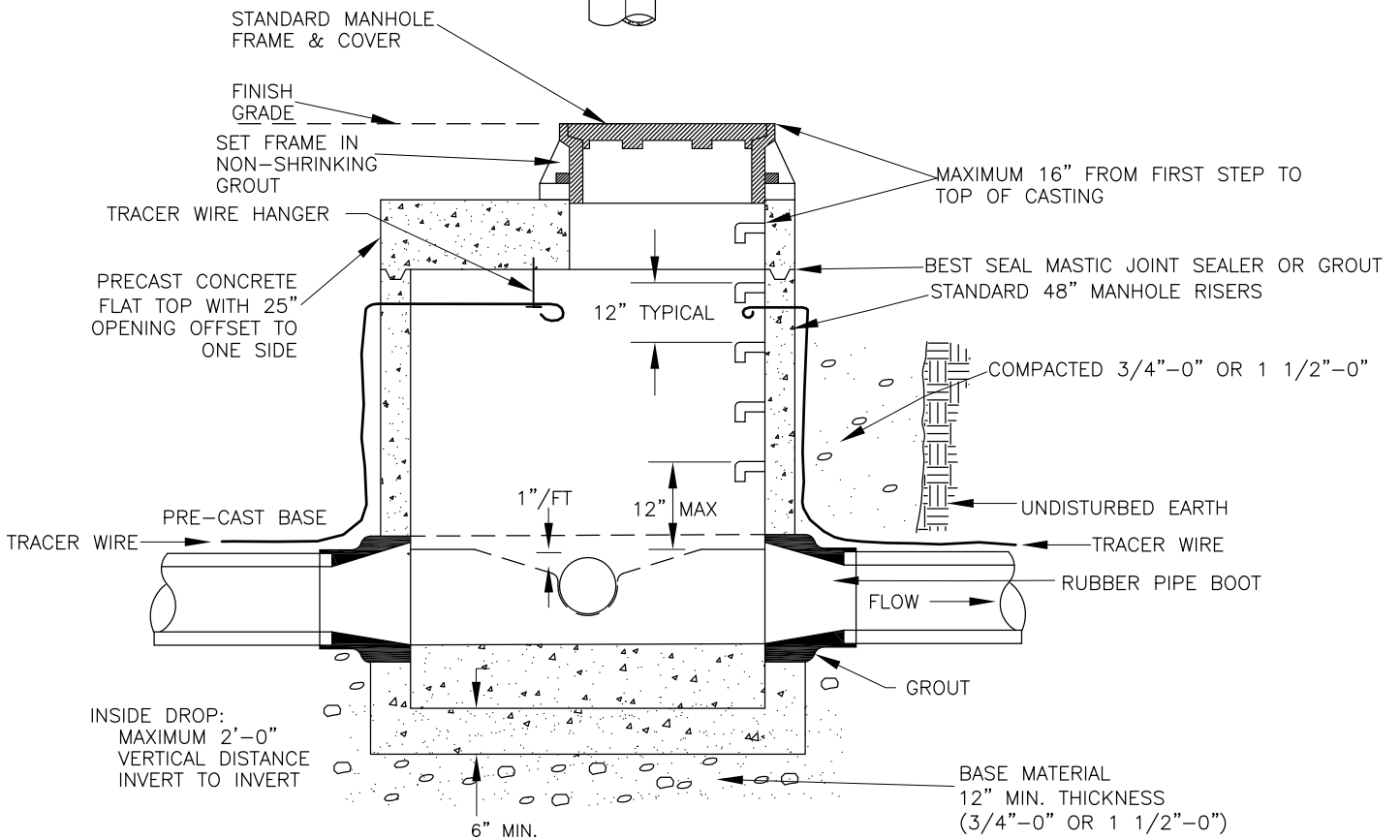


MAKE SURFACE OF GROUT FILLET SMOOTH & FORM GROOVED INVERT TO DIRECTION OF FLOW

NOTE: INLETS/OUTLETS AS REQUIRED.

LOCATE MANHOLE FRAME & COVER OVER LEDGE OF AT LEAST 12" IN WIDTH.



STANDARD MANHOLE FRAME & COVER

FINISH GRADE

SET FRAME IN NON-SHRINKING GROUT

TRACER WIRE HANGER

PRECAST CONCRETE FLAT TOP WITH 25" OPENING OFFSET TO ONE SIDE

PRE-CAST BASE

TRACER WIRE

INSIDE DROP: MAXIMUM 2'-0" VERTICAL DISTANCE INVERT TO INVERT

6" MIN.

MAXIMUM 16" FROM FIRST STEP TO TOP OF CASTING

BEST SEAL MASTIC JOINT SEALER OR GROUT STANDARD 48" MANHOLE RISERS

COMPACTED 3/4"-0" OR 1 1/2"-0"

UNDISTURBED EARTH

TRACER WIRE

RUBBER PIPE BOOT

FLOW

GROUT

BASE MATERIAL 12" MIN. THICKNESS (3/4"-0" OR 1 1/2"-0")



City of Astoria
Public Works Department
 1095 Duane Street

Flat Top Manhole Detail

Date Adopt. 11/01/12

Date Rev. 11/16/15

DWG. NO.

Dwg. Name: S-4 Flat Top Manhole.dwg

S-4